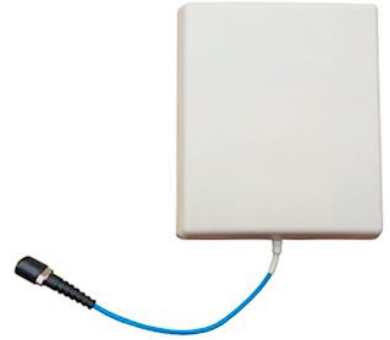
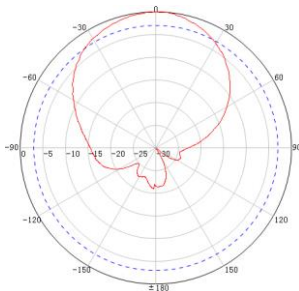




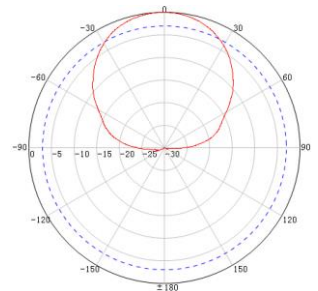
698-2700MHz Low PIM Indoor Panel Antenna
 Model: DB-698/2700-7-65-ID-LP



Electrical Specifications			
Frequency Range	698-960 MHz	1710-2500 MHz	2500-2700 MHz
Gain	6.5 dBi	8 dBi	9 dBi
VSWR	≤2.0	≤1.5	≤1.8
Polarization	Vertical		
PIM, 3rd Order, 2x20W	≤-150 dBc		
Front to Back Ratio	≥15 dB		
Horizontal Beamwidth	65°		
Vertical Beamwidth	55°		
Input Impedance	50 Ω		
Max.Power	50 W		
Lightning Protection	DC Ground		
Mechanical Specifications			
Connector	N-Female		
Dimensions	210x180x43 mm		
Packing Size	240x200x70 mm		
Weight	0.5 kg		
Reflector Material	Brass		
Radome Material	ABS (UV Stabilized)		
Rated Wind Velocity	210 km/h		
Operating Temperature	-40°C to +65 °C		



H-Plane



V-Plane