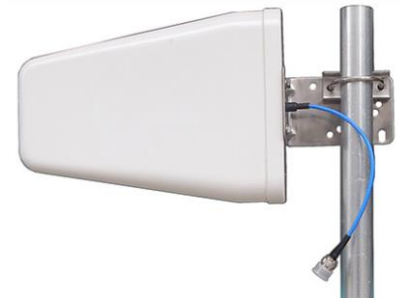
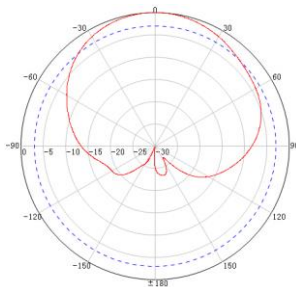




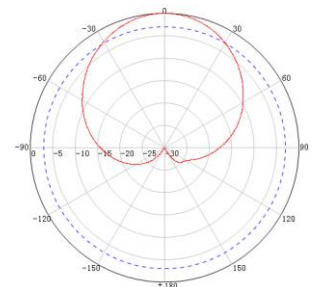
Low PIM Log Periodic Antenna
Model: DBDS-698/2700-9-LP



Electrical Specifications		
Frequency Range	698-960 MHz	1710-2700 MHz
Gain	8/9 dBi	
VSWR	≤2.0	≤1.5
Polarization	Vertical	
3rd PIM (2x43 dBm)	≤-150 dBc	
Front to Back Ratio	≥15 dB	
Horizontal Beamwidth	90°	
Vertical Beamwidth	60°	
Input Impedance	50 Ω	
Max.Power	50 W	
Lightning Protection	DC Ground	
Mechanical Specifications		
Connector	N-Female	
Dimensions	294x210x65 mm	
Packing Size	320x230x75 mm	
Weight	0.87 kg	
Reflector Material	Brass	
Radome Material	ABS	
Rated Wind Velocity	210 km/h	
Operating Temperature	-40°C to +65 °C	
Mounting Pole	Ø38-Ø52 mm	



H-Plane



V-Plane